

MARCIA WEESE

19 March – 16 April

ABOVE

BELOW

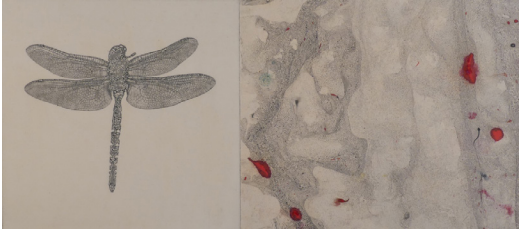
ENTRY



\$150 e — **MT FUJI Series**, mokuhanga woodblock prints, 12 x 9 (framed)

Price includes frame

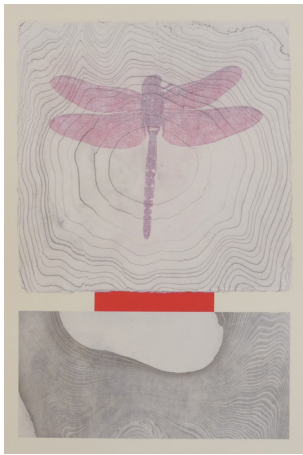
GALLERY



\$1,200 — ***Dragonfly Map III***
etching and marbled paper, 16 x 28



\$1,200 — ***Dragonfly Map VIII***,
etching and suminagashi, 16.5 x 26
w UV resistant plexi and mounts add \$200



\$1,200 — ***Dragonfly Map II***,
monoprint, chine-colle and suminagashi, 22 x 17
w UV resistant plexi and mounts add \$200



\$1,200 — ***Dragonfly Map X***,
etching and suminagashi, 16 x 26
w UV resistant plexi and mounts add \$200



\$1,200 — ***Dragonfly Map IV***,
monoprint, chine-colle and suminagashi, 17 x 28
w UV resistant plexi and mounts add \$200



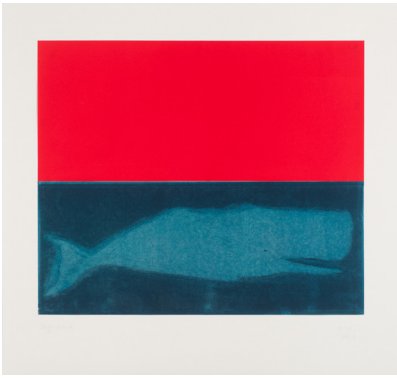
\$1,800 — **Winter I**, monoprint, 41.5 x 30
w UV resistant plexi and mounts add \$200



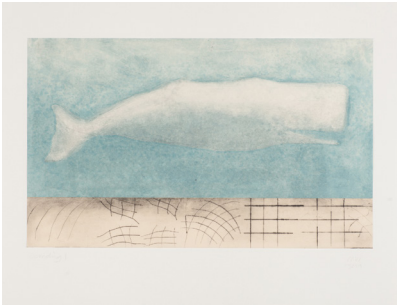
\$1,800 — **Red Tree**, monoprint, 47 x 30
w UV resistant plexi and mounts add \$200



\$1,800 — **Winter II**
monoprint and solar etching, 41.5 x 30
w UV resistant plexi and mounts add \$200



\$1,800 — **Deep Blue**, monoprint, 28 x 30
w UV resistant plexi and mounts add \$200



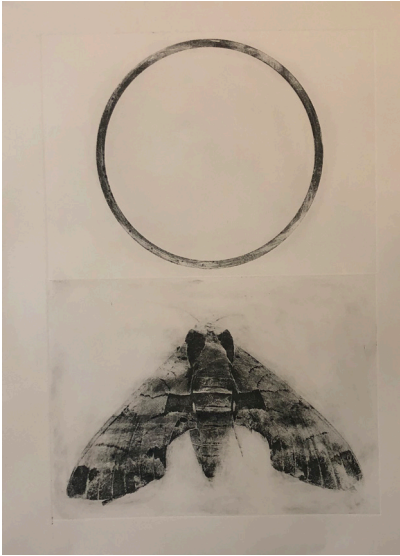
\$1,800 — **Sounding I**, monoprint, 24 x 30
w UV resistant plexi and mounts add \$200



\$1,800 — **Soundings II**, monoprint, 28 x 30
w UV resistant plexi and mounts add \$200



\$1,800 — **Counting I**, monoprint, 35 x 30
w UV resistant plexi and mounts add \$200



\$1,800 — *Moth+Moon III*,
mokuchanga wood block and solar etching, 22 x 30
w UV resistant plexi and mounts add \$200